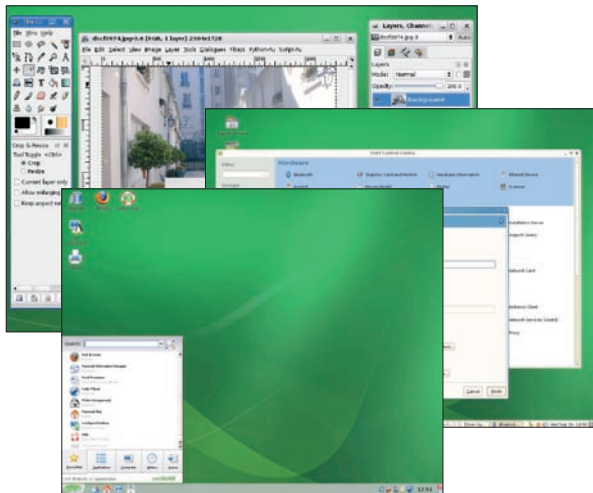


On this DVD:

- Linux kernel 2.6.22.5
- KDE 3.5.7
- Gnome 2.20
- glibc 2.6.1
- OpenOffice 2.3.0
- KOffice 1.6.3
- GIMP 2.2.17
- Firefox 2.0
- Thunderbird 2.0
- AmaroK 1.4.7
- Kaffeine 0.8.5
- Banshee 0.13.1
- K3b 1.0.3
- Apache 2.2.4
- Bind 9.4.1
- Samba 3.5.7
- Perl 5.8.8
- Python 2.5.1
- PHP 5.2.4

openSUSE 10.3



OpenSUSE is Novell's all-purpose distro for everybody. Version 10.3 is the latest in the long and illustrious line of SUSE Linux. This month's Linux Magazine DVD comes with 32-bit, 64-bit, and live versions of openSUSE 10.3 on a double-sided disc.

What's Inside

OpenSUSE 10.3 runs on Linux kernel 2.6.22.5. On the desktop, you'll find KDE 3.5.7, along with preliminary versions of some KDE 4 games and tools. Also included is a special version of the GNOME 2.20 desktop with what the developers call "SUSE polished additions."

New 1-Click Install lets you manage access to package repositories, and re-designed YaST modules provide easier configuration for virtualization tools, network cards, and other devices. 1-Click also offers easy install

for multimedia codecs. Other multimedia improvements include better MP3 support.

Boot Time

Kernel patches and updates to init boot scripts yield improvements in boot time. Developers have also fixed bugs and optimized preload lists for additional boot improvements - tests indicate potential boot time improvements of up to 50% for some configurations.

Virtualization

OpenSUSE continues to improve its support for virtualization, adding new tools and updating several popular virtualization utilities. Version 10.3 comes with Kernel-based Virtual Machine (KVM) support. You'll also find support for Xen 3.1, QEMU, and

VirtualBox, as well as some handy tools for virtual machine installation and management.

Package Management

The ZMD package-management system is replaced with the libzypp system. Two new package management applications accompany these improvements. Zypper is a versatile command-line tool for installing and managing packages from the terminal window. OpenSUSE Updater is a GUI-based utility that notifies you about software updates.

Try It!

The many improvements in openSUSE 10.3 provide faster performance, better virtualization, and easier package management. We hope you enjoy this month's openSUSE 10.3 DVD.

HELP & SUPPORT

See <http://support.novell.com/forums/2su.html> for a summary of Novell-sponsored support forums. See also <http://www.suseforums.net/>, <http://en.opensuse.org/Communicate>, <http://en.opensuse.org/SDB:SDB>, and the openSUSE documentation page <http://en.opensuse.org/Documentation>.

DEFECTIVE DVD?
Defective DVDs will be replaced. Please send an email to subs@linux-magazine.com.

While this Linux Magazine DVD-ROM has been tested and is to the best of our knowledge free of malicious software and defects, Linux Magazine cannot be held responsible, and is not liable for, any disruption, loss, or damage to data and computer systems related to the use of this DVD.

openSUSE 10.3

Everything you need to work efficiently with Linux.

Double-sided DVD
Includes 32-bit, 64-bit, and live versions

- Brand new release - latest software versions
- Hundreds of applications for home, office, Internet
- Improved compatibility with MS Office 2007
- Integrated antispam, antivirus, firewall
- Out-of-the-box MP3 playback

Includes:
KDE 3.5.7
OpenOffice.org 2.3.0
Gnome 2.20
Firefox 2.0
Thunderbird 2.0
and much, much more



Novell.

DVD ROM